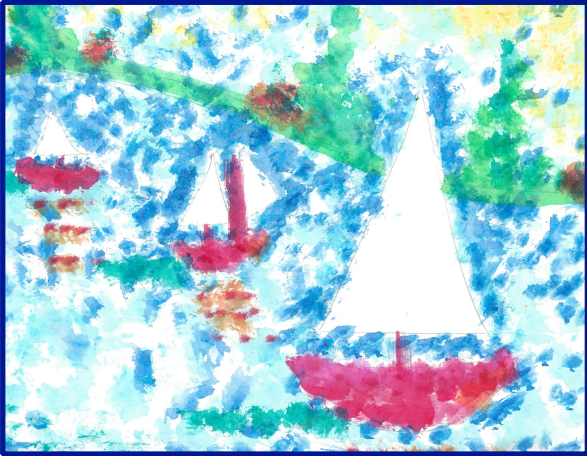


# Art Camp: July 22, 9-1@Faith Community



**1. Monet Boats** Claude Monet was a famous Impressionist painter. He used dabs of color to show how light makes things shimmer. His paintings did not look realistic but were rather an impression. He painted many scenes of boats on water. Students will use bleeding tissue paper to create their own version of Monet's red boats on water.



**2. Peter Keil Portrait** Peter Keil was born in Germany. He met Pablo Picasso and Joan Miro, two famous Spanish painters who greatly influenced his art. Keil is more interested in using color to show emotion than he than in painting something that looks real. He lives in both Germany and Los Angeles. Students will use tempera paint to create an Expressionist portrait.



**3. Paul Klee and Mary Blair-** Paul Klee used simple shapes to create a castle and a sun. Mary Blair also used simple shapes to make many castles! She worked for Walt Disney. She designed the sets for "Its A Small World" and the animation for *Peter Pan*, *Alice in Wonderland* and *Cinderella*. Students will use construction paper, glue and scissors to design their own castle.

To register: <https://faithsandiego.ccbchurch.com/goto/forms/343/responses/new>